

LATIN ROMAN CAPS

A B C
D E F
G H I

J K L
M N O
P Q R

S T U
V W X
Y & Z

OTHER LETTERS AND CURRENCY

Æ œ Ū
Ð Þ ß
\$ € £

LATIN ROMAN LOWERCASE

a b c
d e f
g h i

J K L
M N O
P Q R

S T U
V W X
Y & Z

OTHER LETTERS AND ALTERNATE FORMS

æ œ Ū
ð þ ß
t f g

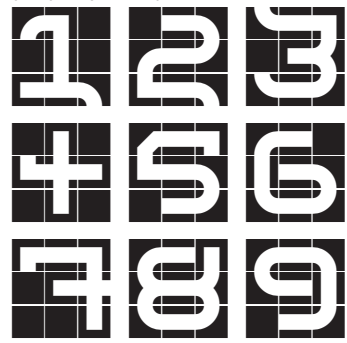
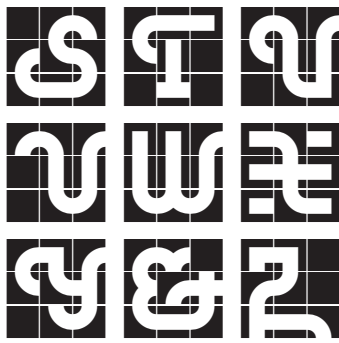
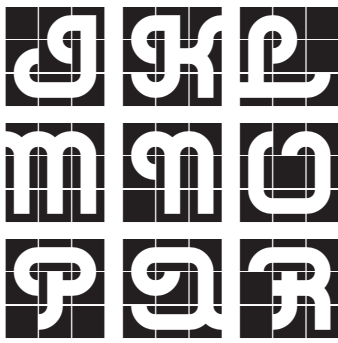
NUMERALS

1 2 3
4 5 6
7 8 9

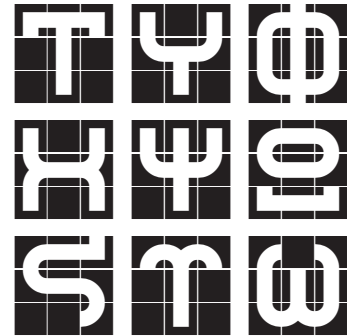
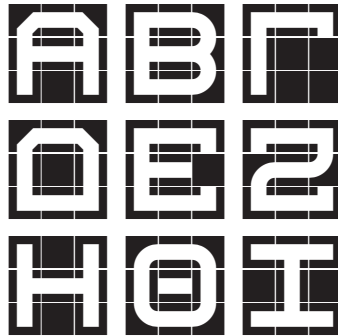
LATIN ROMAN SWASH CAPS

A B C
D E F
G H I

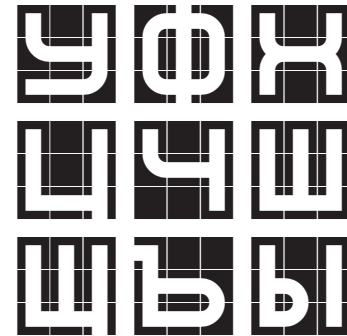
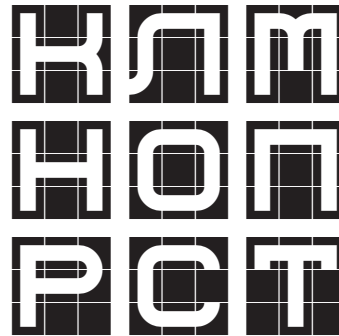
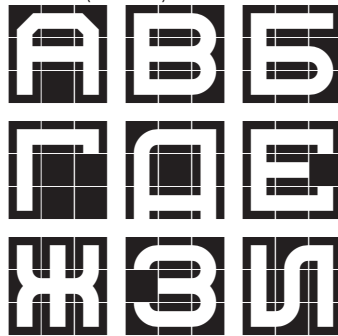




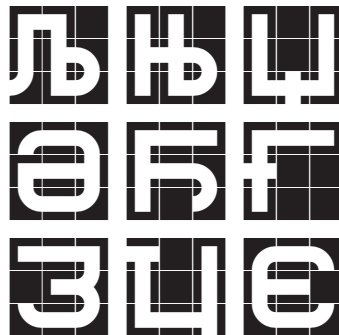
GREEK CAPS



CYRILLIC (RUSSIAN) CAPS



OTHER CYRILLIC CAPS



AMPERSANDS

