



The P22 Civilite suite of fonts includes the
 6 basic Dutch versions of Civilité
 the styles 8, 9, 11, 14 & 32 (historic) are digitized as they
 were displayed in the Enschedé specimens.



P22 Civilite Suite preview:

Historic & Modern Sources



<http://www.p22.com/civilite>

Each style includes a “historic” & “modern” variation.

The modern versions are designed to
 include newly drawn letter-forms that are
 sympathetic to the historical style, but much more
 legible to the contemporary reader.



Left, No. 8.
Right, No. 9.

Ɑ	a
Ɱ	Ɱ Ɱ
Ɐ	Ɐ Ɐ
Ɒ	e e e e e e e
ⱱ	f ff fi fe
Ⱳ	g g
ⱳ	h h h
ⱴ	i
Ⱶ	i
ⱶ	ⱶ f
ⱷ	l l
ⱸ	m m m
ⱹ	n n y
ⱺ	o o
ⱻ	p
ⱼ	q
ⱽ	r r
Ȿ	s st s s f f f f f
Ɀ	t t
Ⳁ	u v w
ⳁ	v v w
Ⳃ	w w
ⳃ	x x
Ⳅ	y z z
ⳅ	z z

Ɑ	a
Ɱ	Ɱ Ɱ
Ɐ	Ɐ
Ɒ	Ɒ Ɒ
ⱱ	e e e e e e e
Ⱳ	f ff fi fe
ⱳ	g g g
ⱴ	h h
Ⱶ	i
ⱶ	i
ⱷ	ⱷ f
ⱸ	l
ⱹ	m m m
ⱺ	n n y y
ⱻ	o o
ⱼ	p
ⱽ	q
Ȿ	r r
Ɀ	s st s f f f f f
Ⳁ	t t
ⳁ	u v w
Ⳃ	v v w
ⳃ	w w
Ⳅ	x x
ⳅ	y z z
Ⳇ	z z

Key:
Red—Modern
Black—Historic

a	a	a
b	b	
c	c	ca ce ch ci co cr ct cu
d	d	da de dh di do dr dt du
e	e	ea ee eh ei eo er et eu
f	f	fa fe fh fi fo fr ft fu
g	g	ga ge gh gi go gr gt gu
h	h	ha he hh hi ho hr ht hu
i	i	ia ie ih ii io ir it iu
j	j	ja je jh ji jo jr jt ju
k	k	ka ke kh ki ko kr kt ku
l	l	la le lh li lo lr lt lu
m	m	ma me mh mi mo mr mt mu
n	n	na ne nh ni no nr nt nu
o	o	oa oe oh oi oo or ot ou
p	p	pa pe ph pi po pr pt pu
q	q	qa qe qh qi qo qr qt qu
r	r	ra re rh ri ro rr rt ru
s	s	sa se sh si so sr st su
t	t	ta te th ti to tr tt tu
u	u	ua ue uh ui uo ur ut uu
v	v	va ve vh vi vo vr vt vu
w	w	wa we wh wi wo wr wt wu
x	x	xa xe xh xi xo xr xt xu
y	y	ya ye yh yi yo yr yt yu
z	z	za ze zh zi zo zr zt zu

a	a	a
b	b	
c	c	ca ce ch ci co cr ct cu
d	d	da de dh di do dr dt du
e	e	ea ee eh ei eo er et eu
f	f	fa fe fh fi fo fr ft fu
g	g	ga ge gh gi go gr gt gu
h	h	ha he hh hi ho hr ht hu
i	i	ia ie ih ii io ir it iu
j	j	ja je jh ji jo jr jt ju
k	k	ka ke kh ki ko kr kt ku
l	l	la le lh li lo lr lt lu
m	m	ma me mh mi mo mr mt mu
n	n	na ne nh ni no nr nt nu
o	o	oa oe oh oi oo or ot ou
p	p	pa pe ph pi po pr pt pu
q	q	qa qe qh qi qo qr qt qu
r	r	ra re rh ri ro rr rt ru
s	s	sa se sh si so sr st su
t	t	ta te th ti to tr tt tu
u	u	ua ue uh ui uo ur ut uu
v	v	va ve vh vi vo vr vt vu
w	w	wa we wh wi wo wr wt wu
x	x	xa xe xh xi xo xr xt xu
y	y	ya ye yh yi yo yr yt yu
z	z	za ze zh zi zo zr zt zu

Left, No. 11.
Right, No. 12.

Key:
Red—Modern
Black—Historic

Left, No. 14.
Right, No. 30.

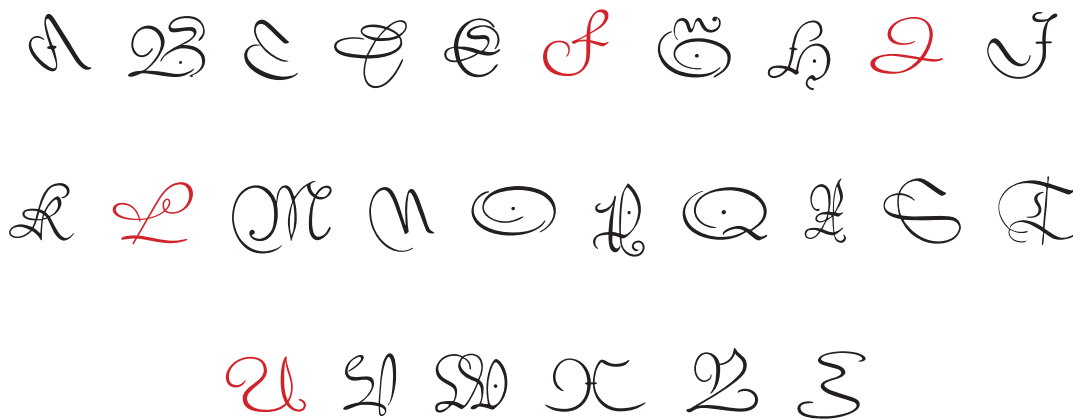
A a	a
B b	b b
C c	c r g
D d	d s d d d
E e	e e r e e e u e y e x e t
F f	f ff ff ff fi fi fe
G g	g g g
H h	h h h e
I i	i
J j	j
K k	k
L l	l l
M m	m m m
N n	n m y
O o	o v
P p	p
Q q	q
R r	r z r
S s	s t ff ff ft
T t	t t
U u	u b / o o
V v	v b
W w	w w
X x	x e
Y y	y e y
Z z	z z

A a	a
B b	b
C c	c d
D d	d o d o
E e	e e
F f	f ff ff ff fi fi ft
G g	g
H h	h
I i	i
J j	j
K k	k
L l	l t t
M m	m m
N n	n y
O o	o
P p	p
Q q	q
R r	r z
S s	s st e f fi ff ft
T t	t t
U u	u b
V v	v b
W w	w w
X x	x
Y y	y
Z z	z

Key:
Red—Modern
Black—Historic



Initials, Capitals



Initials, Alternates



Key:

Red—Modern

Black—Historic

Initials, Ornaments