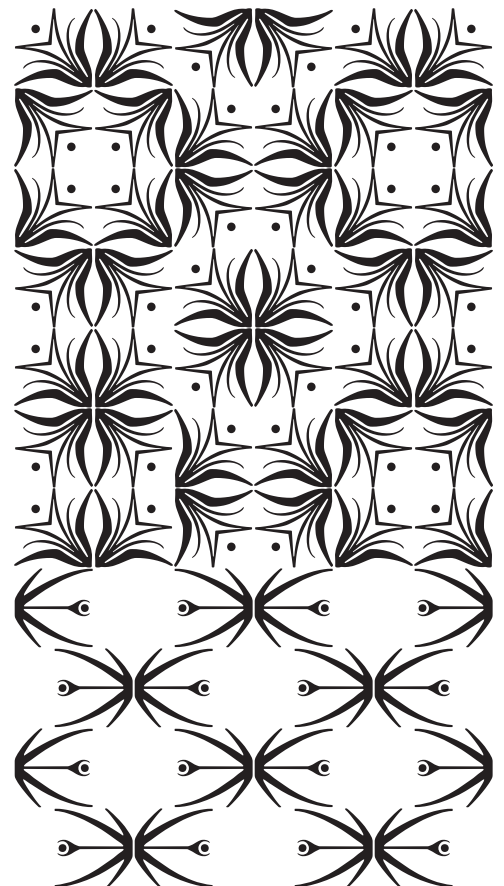
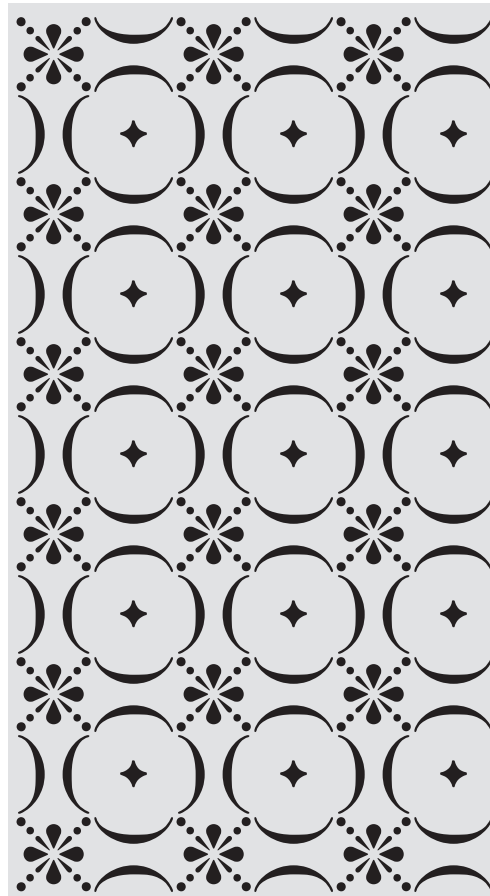
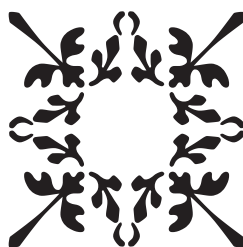
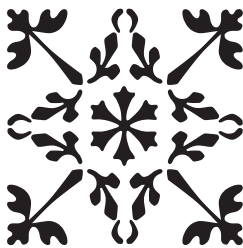
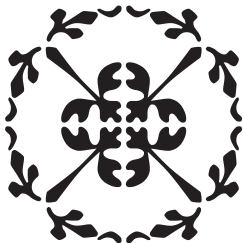


LTC ORNAMENTS 2

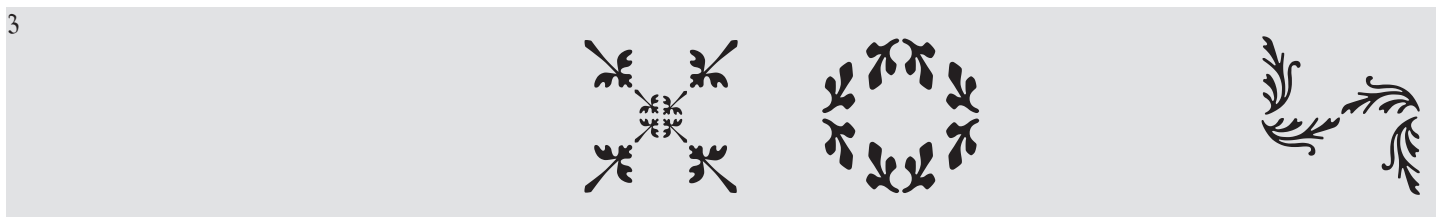
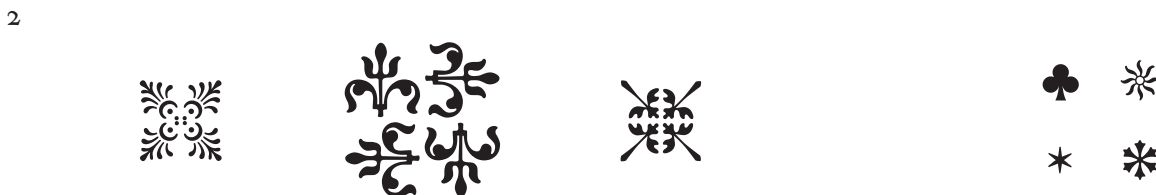
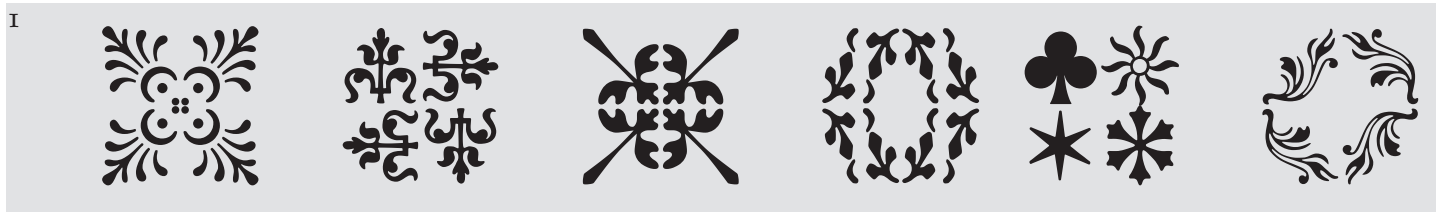
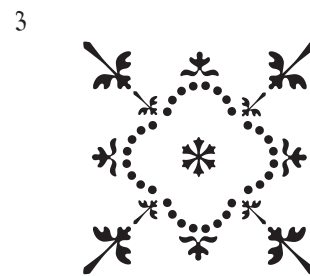
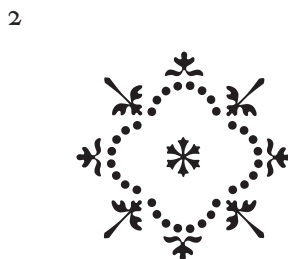
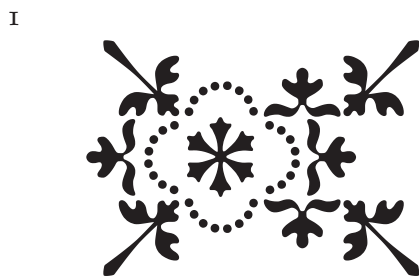


LTC Ornaments Two is the first Lanston Ornament font which used Opentype features to assist in decorative border creation. The ornaments themselves features designs of Fournier and other classic fleurons and ornaments whose origins date back to the earliest printers.

130 Ornaments w/ opentype



USING OPENTYPE FEATURES WITH LTC ORNAMENTS 2



- (1) REGULAR
- (2) SMALL CAPS
- (3) CONTEXTUAL ALTERNATES

ACTIVATING EITHER THE SMALL CAPS OR CONTEXTUAL ALTERNATES OPENTYPE FEATURE WILL CHANGE CERTAIN GLYPHS. IN MOST CASES SMALL CAPS WILL REDUCE THE GLYPHS SIZE AND THE CONTEXTUAL ALTERNATES WILL SUBSTITUTE A NEW GLYPH.



CONTEXTUAL ALTERNATES WILL ALSO ALTERNATE CERTAIN CHARACTERS BETWEEN FULL AND HALF SIZE.